

Sample
preparation
made easy.



revvity

Omni Bead Ruptor Elite™ bead mill homogenizer
For research use only. Not for use in diagnostic procedures.

Maximize sample preparation efficiency.

The Omni Bead Ruptor Elite™ bead mill homogenizer is designed with a unique carriage motion to ensure that the intra-tube bead movement reduces swirling and results in the highest bead impact forces of any bead mill on the market. The increased power of the Omni Bead Ruptor Elite decreases processing time and reduces sample heating to maximize sample preparation efficiency.

Features:

- Touch screen interface
- Optimized tube motion with speeds up to 8 m/s
- Process up to 48 x 2 mL samples per cycle
- Convenient front loading design
- Locking Safety Lid
- Optimate™ software
 - Intuitive user interface
 - Customize and save programs
- Widest range of accessories available
- Process samples from 25 µL to 50 mL

What's included:

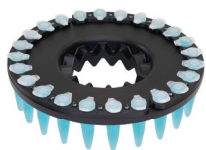
- Omni Bead Ruptor Elite
- Power cords - US, EU, UK, AU, or JP*
- Universal finger plate (Part no. 19-370)
- User manual
- Spare fuse

*JP Power Cord only available with 19-042J



The optional Omni Bead Ruptor Cryo Cooling Unit (19-8005) is designed to minimize the increase of sample temperature during the homogenization process.

Accessories



1.5 mL Microcentrifuge Tube Carriage

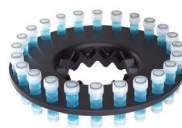
Compatible with most 1.5 mL microcentrifuge tubes

Capacity: 24 x 1.5 mL microcentrifuge tubes

Volume range: 200 μ L - 1 mL

Force limit: Maximum speed of 8 m/s

Part number: 19-372



2 mL Tube Carriage

Requires Omni 2 mL tubes

Capacity: 24 x 2 mL skirted screw cap tubes

Volume range: 200 μ L - 1.5 mL

Force limit: Maximum speed of 8 m/s

Part number: 19-373



48 Place 2 mL Tube Carriage with 2 mL Finger Plate

Requires Omni 2 mL tubes

Capacity: 48 x 2 mL skirted screw cap tubes

Volume range: 200 μ L - 1.5 mL

Force limit: Maximum speed of 7 m/s

Part number: 19-378



7 mL Tube Carriage

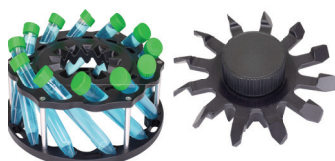
Requires Omni 7 mL tubes

Capacity: 12 x 7 mL skirted screw cap tubes

Volume range: 0.5 mL - 5 mL

Force limit: Maximum speed of 6 m/s

Part number: 19-374



15 mL Tube Carriage with 15 mL Finger Plate

Requires Omni 15 mL tubes

Capacity: 12 x 15 mL screw cap conical centrifuge tubes

Volume range: 500 μ L - 10 mL

Force limit: Maximum speed of 5 m/s

Part number: 19-375



30 mL Tube Carriage with 30 mL Finger Plate

Requires Omni 30 mL tubes

Capacity: 6 x 30 mL tubes

Volume range: 5 mL - 30 mL

Force limit: Maximum speed of 5 m/s

Part number: 19-376-HT



50 mL Tube Carriage

Requires Omni 50 mL tubes

Capacity: 3 x 50 mL Tubes

Volume range: 5 mL - 50 mL

Force limit: Maximum speed of 5 m/s

Part number: 19-377

Specifications

Power rating	19-042E - 120-230V, 50/60 Hz 19-042J - 100-115V, 50/60 Hz (Japan)
Performance range	0.8 - 8 m/s in increments of 0.15 m/s
Interface	Programmable touchscreen
Run time	1 second to 9:59 minutes
Processing volume	25 µL to 50 mL
Dimensions	W: 15" (38.1 cm), D: 17" (43.2 cm), H: 13" (33.0 cm)
Weight	65 lbs. (29 kg)
Warranty	One Year
Certification	CE



revvity

Revvity, Inc.
940 Winter Street
Waltham, MA 02451 USA
www.revvity.com

For a complete listing of our global offices, visit www.revvity.com
Copyright ©2024, Revvity, Inc. All rights reserved.
1377415

www.revvity.com