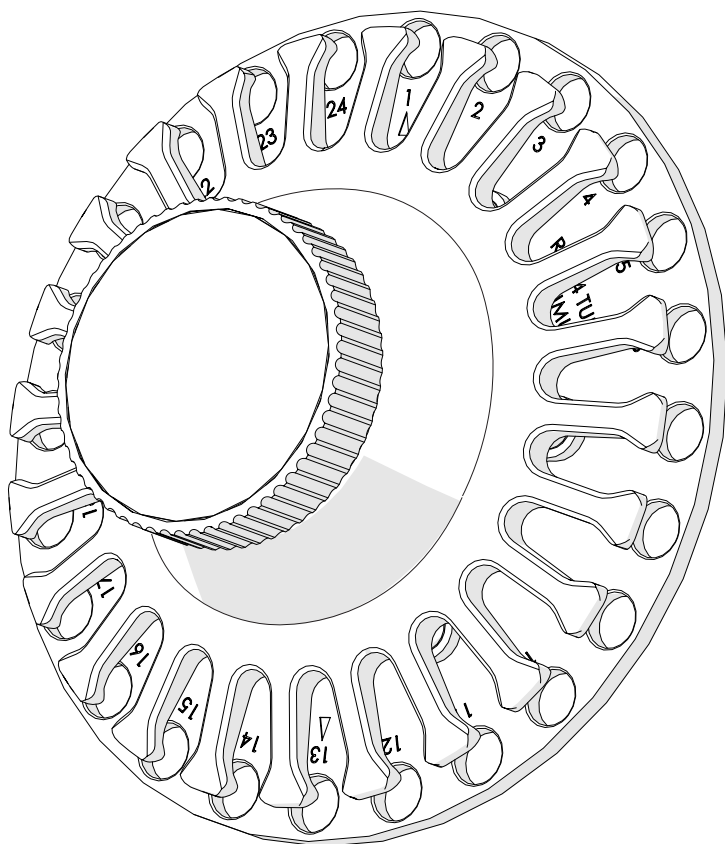


# Bead Ruptor High Throughput Tube Carriage

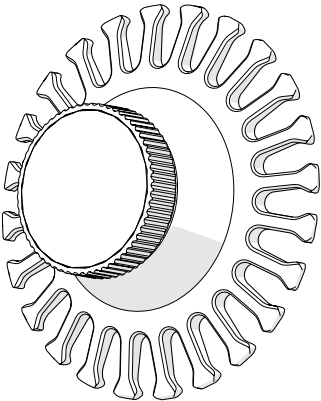
User Manual



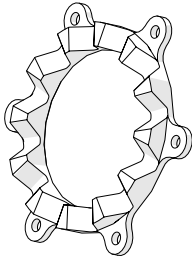
**OMNI**  
International  
The Homogenizer Company®



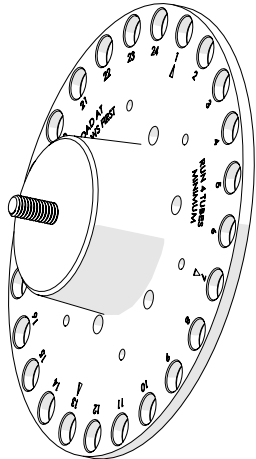
# Overview



HT Finger Plate



HT Locking Ring



2 mL HT Hub



10-32 x .3125 Screw  
Qty - 6



8-32 x .75 Screw  
Qty - 6



Allen Key 1/8



Allen Key 9/64

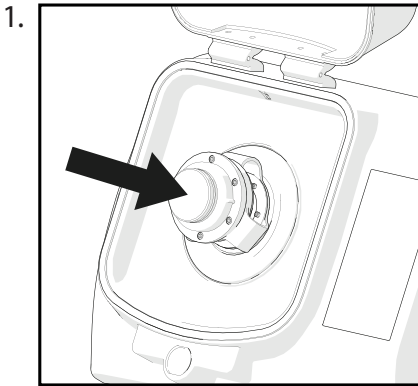


Loctite

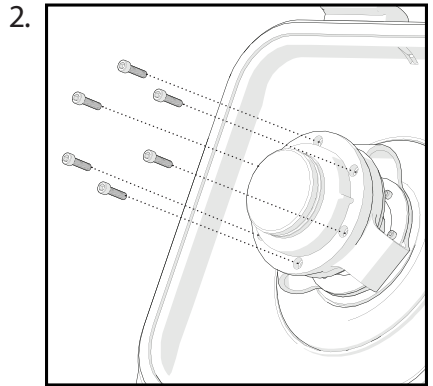
The High Throughput Tube Carriage kit consists of the following:

Description	Quantity	Part Number
2 mL HT Hub	1	19-360-02
HT Locking Ring	1	19-366
HT Finger Plate	1	19-360-01
10-32 x .3125 Screw	6	00-719-04
8-32 x .75 Screw	6	00-719-06
Loctite	1	N/A
Allen Key 1/8	1	60241
Allen Key 1/64	1	00-425
User Manual	1	03-231EHT

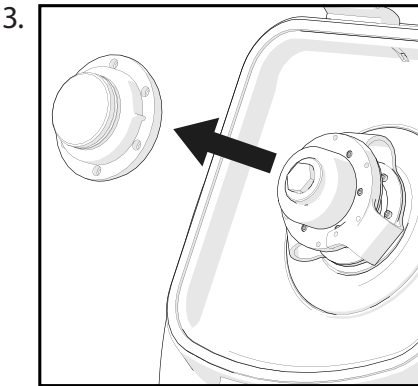
# Installation



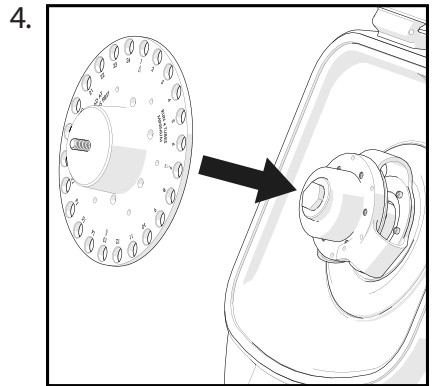
Locate Bead Ruptor Hub.



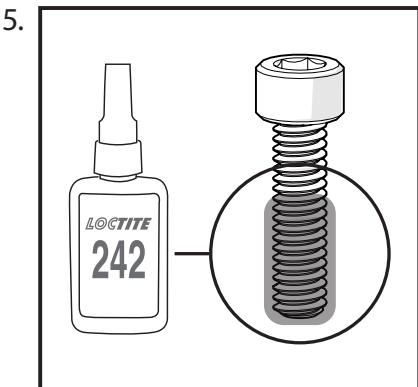
Remove 6 screws from the Hub with provided Allen key.



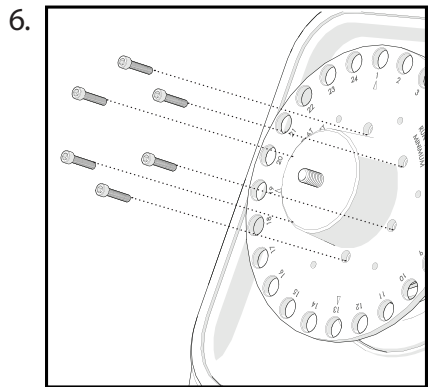
Remove the Bead Ruptor Hub.



Place the 2 mL HT Hub.

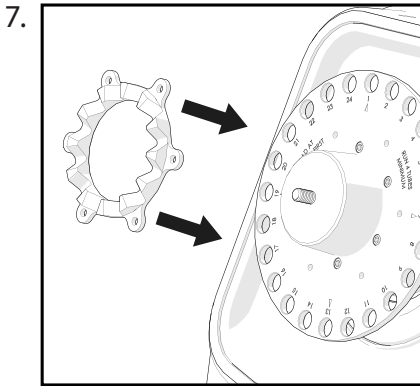


Apply Loctite adhesive to 8-32 x .75 screws before installing.

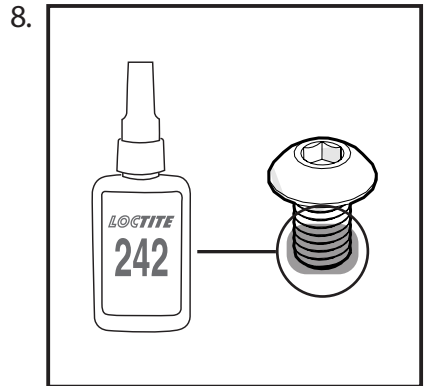


Insert 6 8-32 x .75 screws with the provided Allen key.

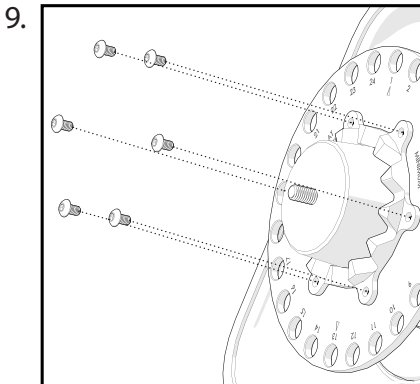
# Installation



Place the HT Locking Ring onto the Tube Carriage plate.

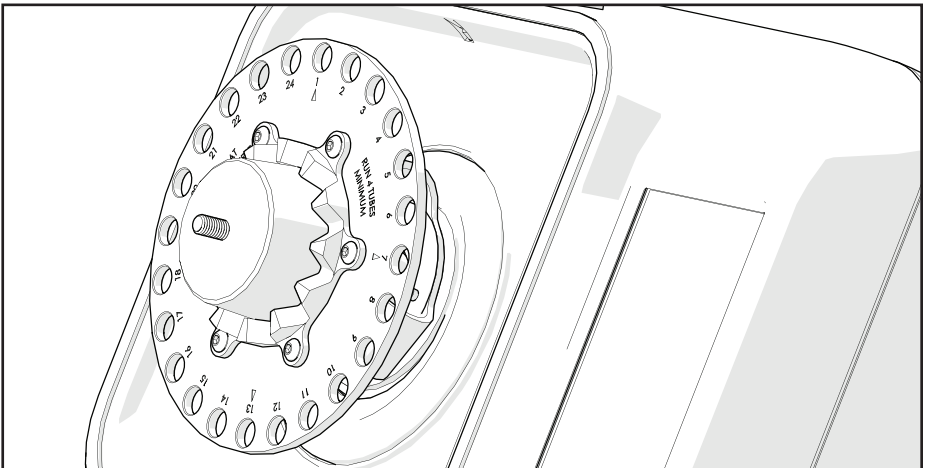


Apply Loctite adhesive to 10-32 x .3125 screws before installing.

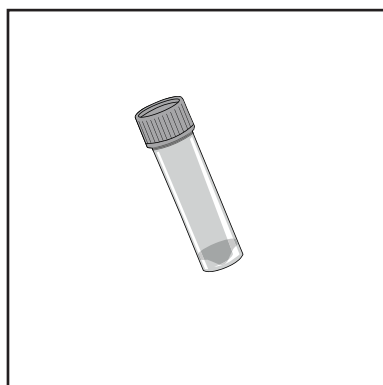
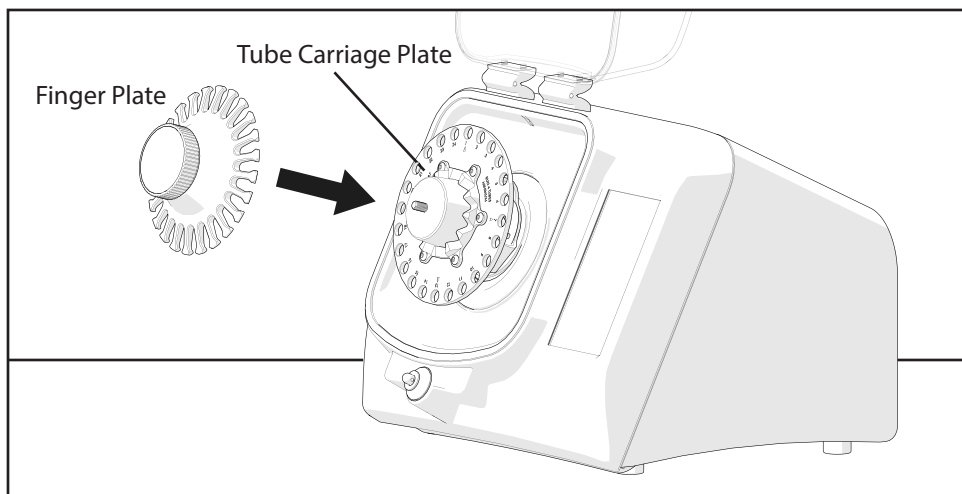


Insert 6 screws in to the HT Locking Ring with the provided Allen key.

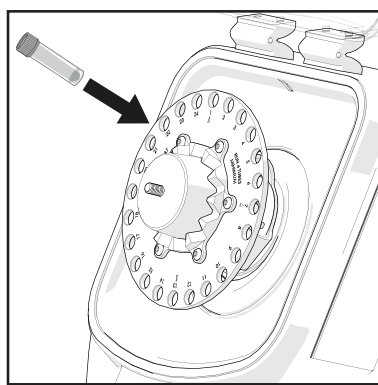
Complete Hub Assembly



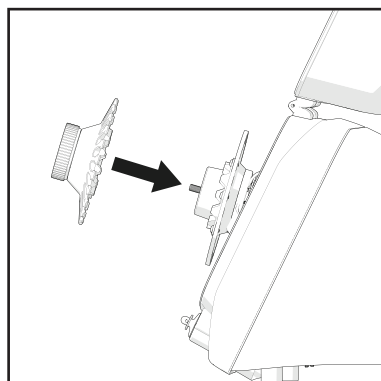
# Loading Sample Tubes



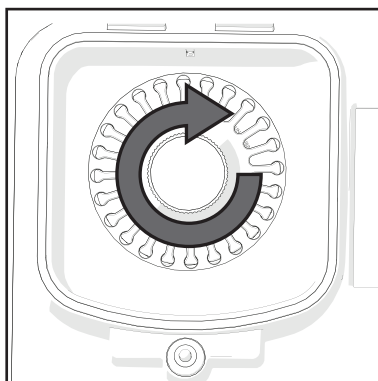
**1.** Fill tubes with material to be homogenized.



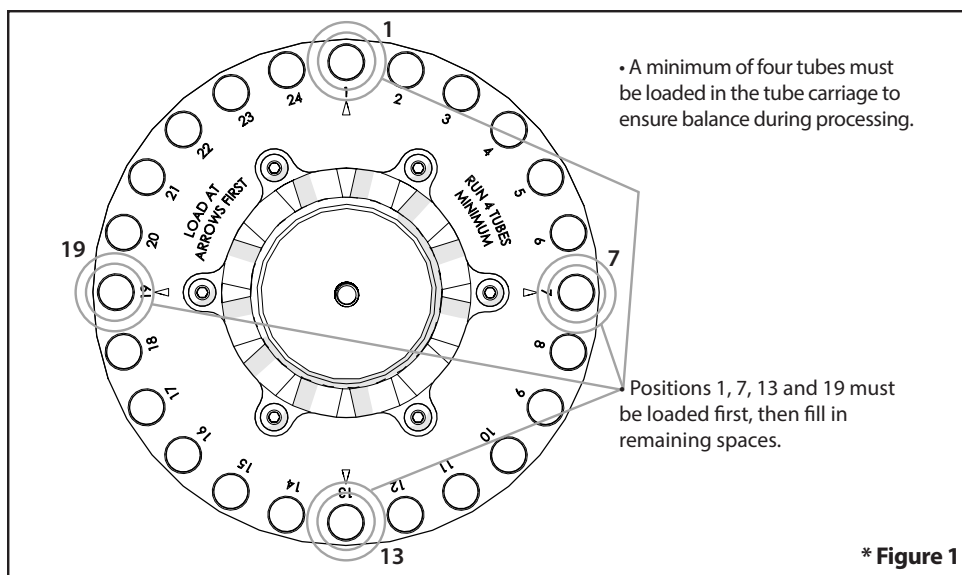
**2.** Load Tubes into the Tube Carriage Plate. \* See Figure 1



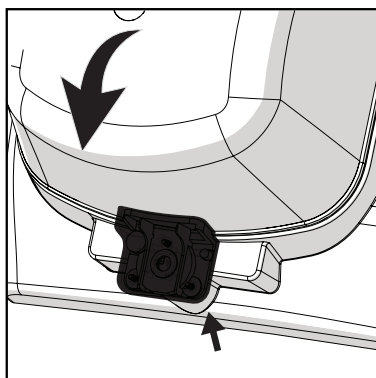
**3.** Place the Finger Plate on to the Tube Carriage Plate.



**4.** Turn handle clockwise until tight.

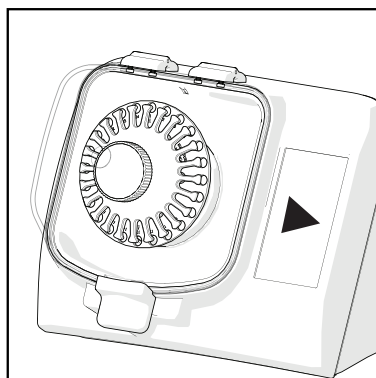


\* Figure 1



**5.** Close the lid until the locking handle clicks into place.

**CAUTION:** The unit will not run without the lid fully closed.



**6.** Begin processing cycle.



**OMNI**  
International

935C Cobb Place Blvd.  
Kennesaw, GA 30144  
800.776.4431 • 770.421.0058  
[www.omni-inc.com](http://www.omni-inc.com)

PN: 03-231EHT Rev. C